

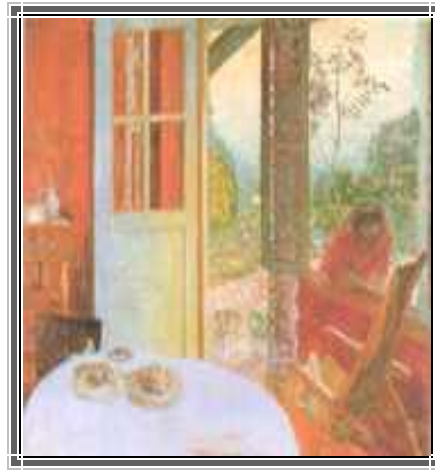
# VALUE

**Value:** how light or dark something appears to be.

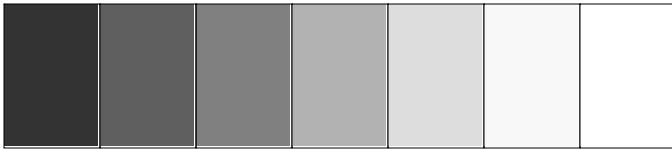
Value is measured from low to high. Low means very dark and high means very light. A picture is said to be in a key, much like music. If a picture is very light it is considered a high key picture; if it is very dark, it is a low key picture.



Which one of these paintings is executed in a high key and which one is in a low key? How do you feel looking at each painting?



A **value gradient** is a strip of values ranging from low to high. There can be an infinite number of values on a gradient. When seen from a far this gradient will represent a fade from dark to light. This fade is the foundation of shading for dimensionality. This is called **shading** or **rendering**.



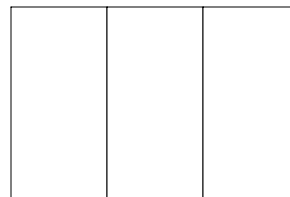
**LOW KEY** ----- > **HIGH KEY**

Value can be represented using any tool which will make a mark. One can create value using a pencil or a pen. One can create value with color. Yes, colors have value as well. Is there a difference in value between a purple sweater and a yellow one?

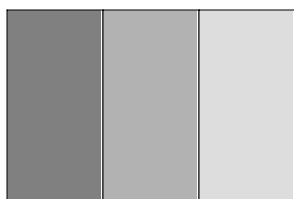
**Pointillism:**  
using small dots to create value or blend color.



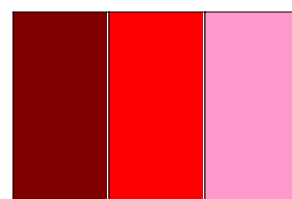
**Cross hatching:**  
Superimposing two or more layers of lines to create value or blend color.



**Creating a value gradient by blending graphite**



**Creating a value gradient with color**



**Create value gradients in each of the following strips. Use a pencil and a tortillion in the first and a pen (pointillism) in the second. The third gradient should be filled with cross hatching color pencils. Render the circle and the heart shape dark at the edges and light towards the center**

